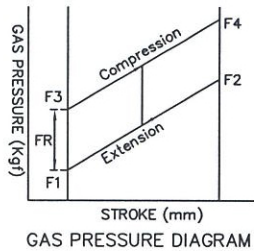
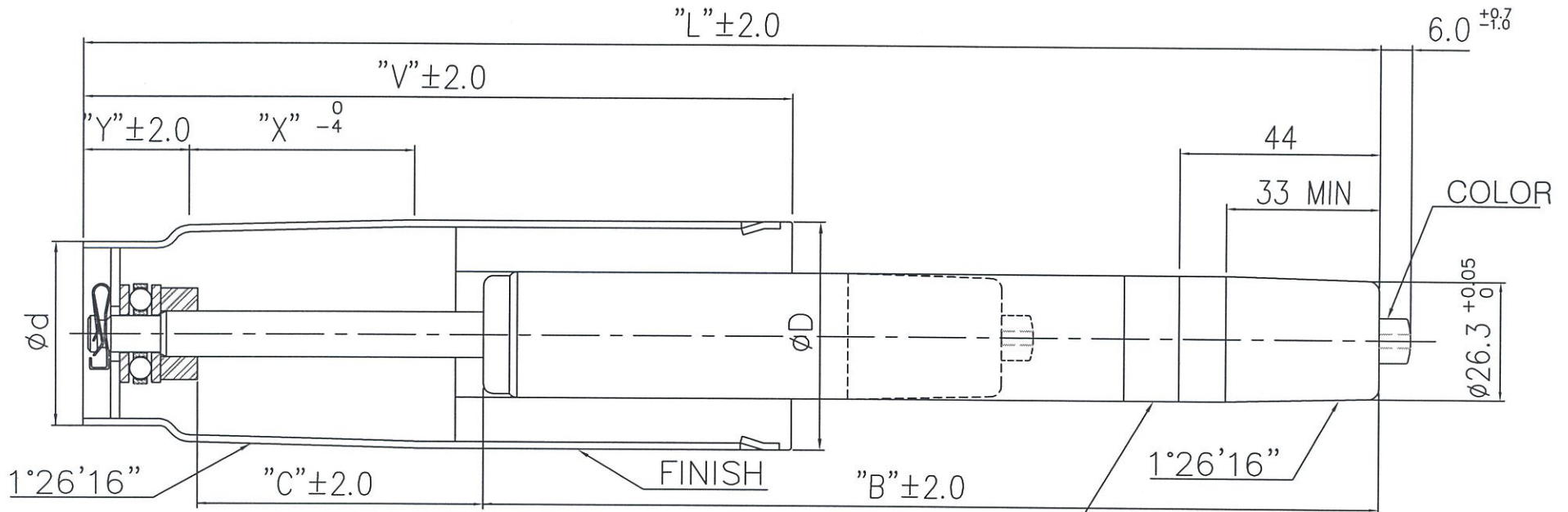


MODEL : GAS LIFT



MARKING

0605B  
 DON'T OPEN OR HEAT ! HIGH PRESSURE !  
 TYPE KGL DIN 4550 KLASSE 3. TUV  
 BS 5459 LEVEL "S"

- NOTES
1. GAS PRESSURE F1= 400 Kgf<sup>+4Kgf</sup>/<sub>-2Kgf</sub> , FR MAX=8Kgf
  2. CAN FINISH : CHROME PLATING.
  3. OUTER PIPE : HARD CHROME PLATING(2.0T).

REV	DATE	DESCRIPTION	DESIGNED	CHECKED	APPROVED
Δ	2006. 11. 04	"Y": 70 → 80			
Δ	2006. 05. 20	BUYER CODE: COLON29 → COLON28			

NO	MODEL NO.	BUYER CODE	"L"	"C"	"B"	"V"	"X"	"Y"	øD	ød	F1(N)	COLOR	FINISH	REMARKS
1	KGL3100-5040C579-R2	COLON 28	349	92	232	195	58	80	ø50	ø44	400	GREEN	CHROME	

NO	PART NO.	PART NAME	Q'TY	MATERIAL	REMARKS
APPROVED			TITLE : GAS LIFT (CM)		
CHECKED			Korea Gas Spring CO.,LTD.		
DESIGNED					
DATE	2006.04.25	TOL	X <sub>xx</sub> = ±0.5 XX = ±0.1	SCALE	N/S DRAW-NO