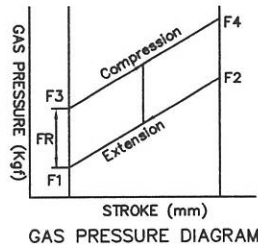
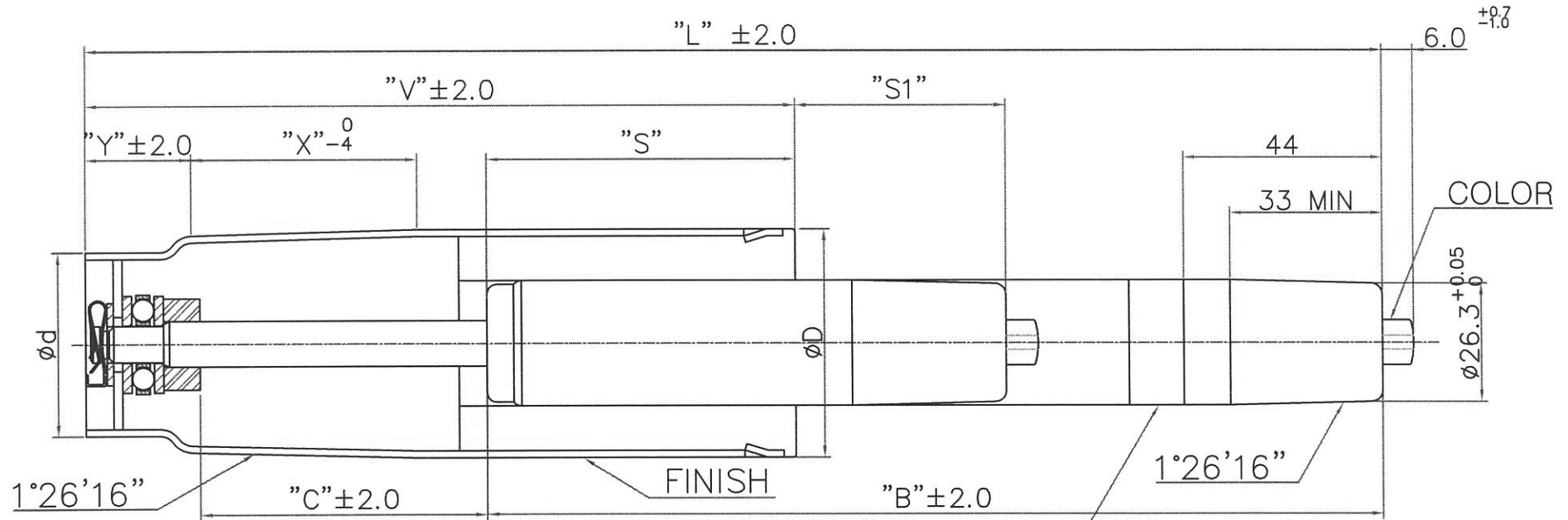


MODEL : GAS LIFT



MARKING

MADE BY KGS CO.,LTD
 DON'T OPEN OR HEAT! HIGH PRESSURE!
 TYPE KGL DIN 4550 KLASSE 3. TUV
 BS 5459 LEVEL 'S'

0804B

- NOTES
1. GAS PRESSURE F1= 30 Kg^{+4kgf}_{-2kgf}, FR MAX=8Kg^f
 2. CAN FINISH : BLACK PAINTING.
 3. OUTER PIPE : HARD CHROME PLATING(2.0T).

REV	DATE	DESCRIPTION	DESIGNED	CHECKED	APPROVED
△	200 . . .				
△	200 . . .				
NO	PART NO.	PART NAME	Q'TY	MATERIAL	REMARKS
APPROVED			TITLE : GAS LIFT (MD)		
CHECKED			KGS Korea Gas Spring CO.,LTD.		
DESIGNED					
DATE	2008.04.22	TOL	X _{xx} = ±0.5 xx = ±0.1	SCALE	N/S DRAW-NO

NO	MODEL NO.	"L"	"C"	"B"	"V"	"X"	"Y"	∅D	∅d	"S"	"S1"	F1(N)	COLOR	FINISH
1	KGL1143-5030C1352	412	135	252	232	58	70	∅50	∅40	72	45	300	GREEN	BLACK