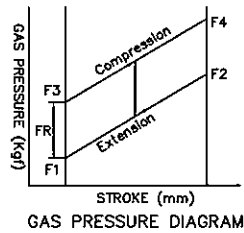
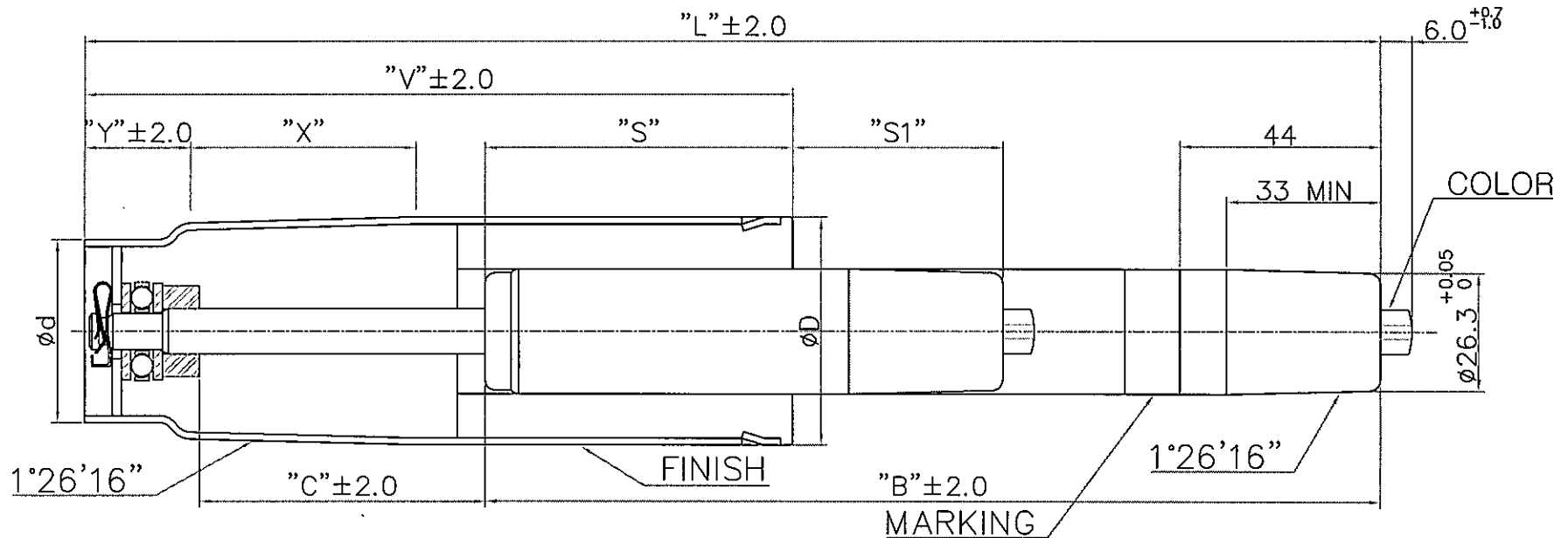


MODEL : GAS LIFT



0706B
 MADE BY KGS CO.,LTD
 DON'T OPEN OR HEAT! HIGH PRESSURE!
 TYPE KGL DIN 4550 KLASSE 3. TUV. LGA
 BS 5459 LEVEL "S"

- NOTES
1. GAS PRESSURE F1= 35 Kgf ^{+4Kgf} _{-2Kgf}, FR MAX=8Kgf
 2. CAN FINISH : CHROME PLATING.
 3. OUTER PIPE : HARD CHROME PLATING(2.0T).

NO	MODEL NO.	"L"	"C"	"B"	"V"	"X"	"Y"	øD	ød	"S"	"S1"	F1(N)	COLOR	FINISH
1	KGL1116-5035C1273	356	108	223	200	58	37	ø50	ø40	67	48	350	GREEN	CHROME
2	KGL1143-5035C1274	412	135	252	230	49	0	ø50		70	47	350	GREEN	CHROME

REV	DATE	DESCRIPTION	DESIGNED	CHECKED	APPROVED
Δ	200				
Δ	200				
NO	PART NO.	PART NAME	Q'TY	MATERIAL	REMARKS
APPROVED			TITLE : GAS LIFT (MD)		
CHECKED			Korea Gas Spring CO.,LTD.		
DESIGNED					
DATE	2007.06.28	TOL	X = ±0.5 XX = ±0.1	SCALE	N/S DRAW-NO