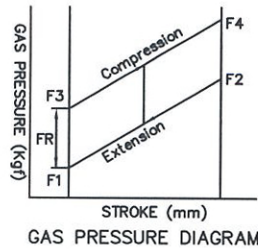
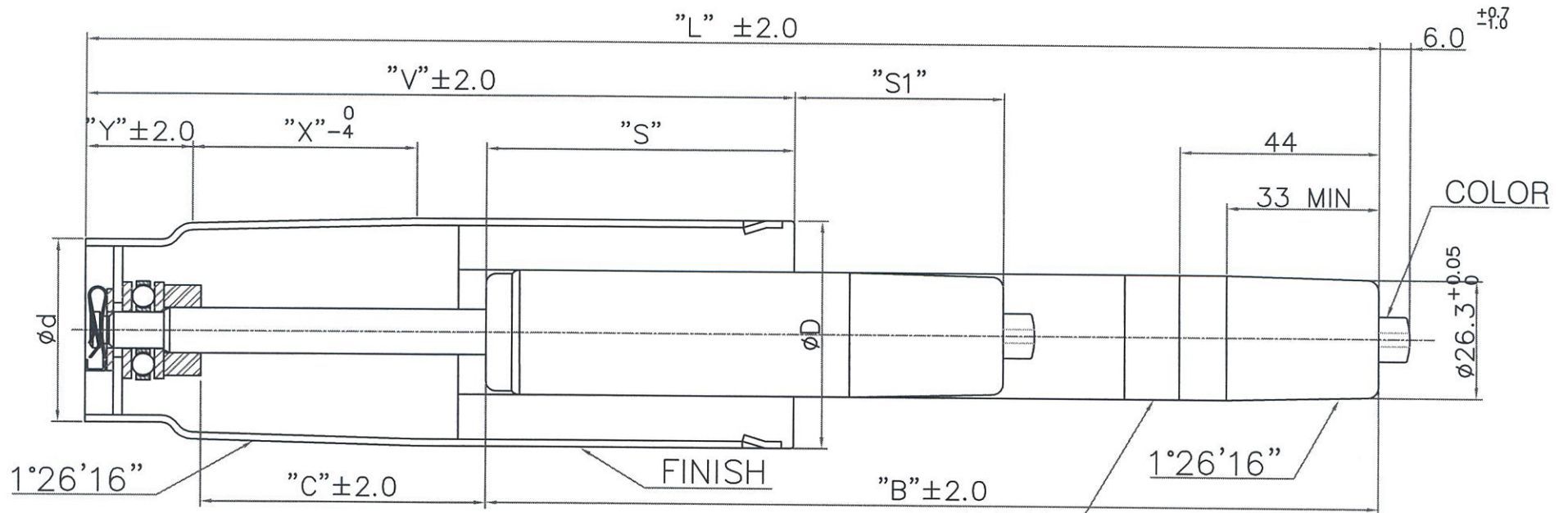


MODEL : GAS LIFT



MARKING

MADE BY KGS CO.,LTD
 DON'T OPEN OR HEAT! HIGH PRESSURE!
 TYPE KGL DIN 4550 KLASSE 3. TUV. LGA
 BS 5459 LEVEL 'S'

0612B

- NOTES
1. GAS PRESSURE F1=35 $\begin{matrix} +4\text{Kgf} \\ -2\text{Kgf} \end{matrix}$, FR MAX=8Kgf
 2. CAN FINISH : CHROME PLATING.
 3. OUTER PIPE : HARD CHROME PLATING(2.0T).

REV	DATE	DESCRIPTION	DESIGNED	CHECKED	APPROVED
△	200				
△	200				

NO	MODEL NO.	"L"	"C"	"B"	"V"	"X"	"Y"	∅D	∅d	"S"	"S1"	F1(N)	COLOR	FINISH
1	KGL1100-5035C889	349	92	232	197	58	17	∅50	∅40	80	60	350	WHITE	CHROME

NO	PART NO.	PART NAME	Q'TY	MATERIAL	REMARKS		
APPROVED		TITLE : GAS LIFT (MD)					
CHECKED		Korea Gas Spring CO.,LTD.					
DESIGNED							
DATE	2006.12.19	TOL	X = ±0.5 XX = ±0.1	SCALE	N/S	DRAW-NO	