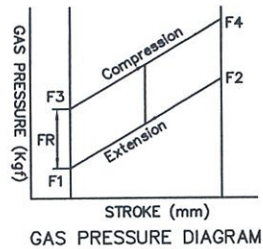
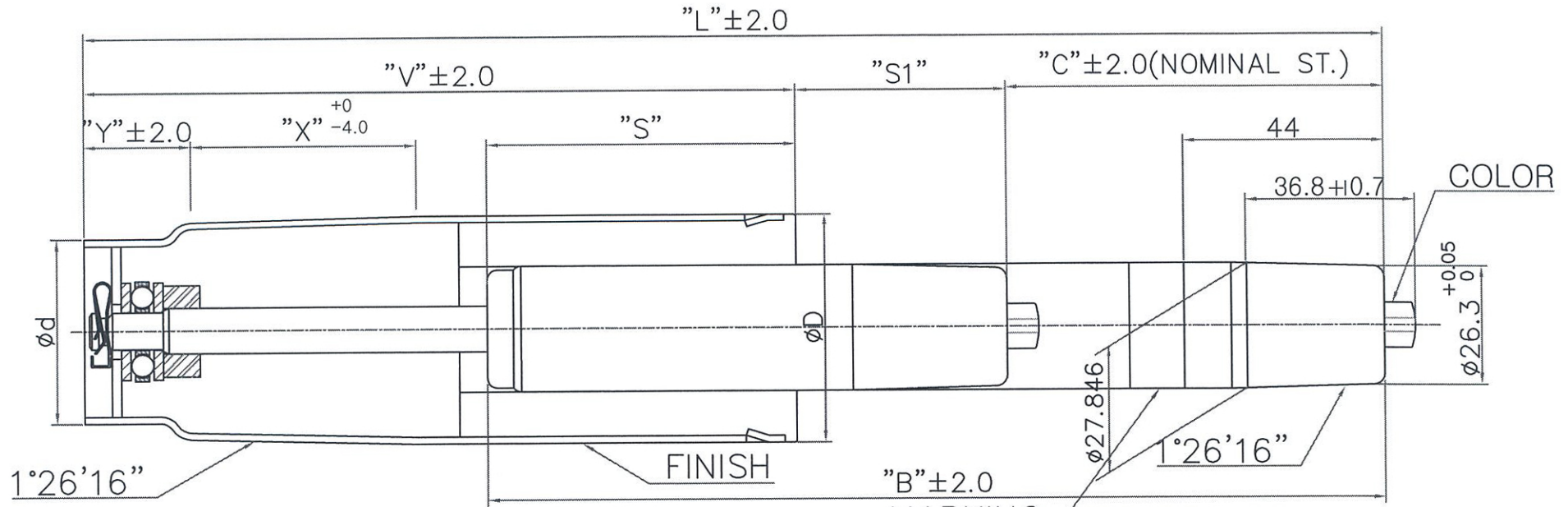




MODEL : GAS LIFT




 MADE BY KGS CO.,LTD
 DON'T OPEN OR HEAT! HIGH PRESSURE!
 TYPE KGL DIN 4550 KLASSE 3. TUV. LGA
 BS 5459 LEVEL "S"

- NOTES
1. GAS PRESSURE F1= 30 Kgf $\pm 4\text{Kg}$, FR MAX=8Kg
 2. CAN FINISH : BLACK PAINTING.
 3. OUTER PIPE : HARD CHROME PLATING(2.0T).

REV	DATE	DESCRIPTION	DESIGNED	CHECKED	APPROVED
△	200 . . .				
△	200 . . .				
NO	PART NO.	PART NAME	Q'TY	MATERIAL	REMARKS
APPROVED		TITLE : GAS LIFT (MD:ECOFFIX)			
CHECKED		 Korea Gas Spring CO.,LTD.			
DESIGNED					
DATE	2007.12.03	TOL	X = ±0.5 X.X = ±0.1	SCALE	N/S DRAW-NO

NO	MODEL NO.	"L"	"C"	"B"	"V"	"X"	"Y"	∅D	∅d	"S"	"S1"	F1(N)	COLOR	FINISH
1	KGL1100-5030C1534	349	92	232	197	58	50	∅50	∅40	80	60	300	BLACK	BLACK
2	KGL1080-5030C1535	306	72	209	175	58	27	∅50	∅40	78	59	300	BLACK	BLACK